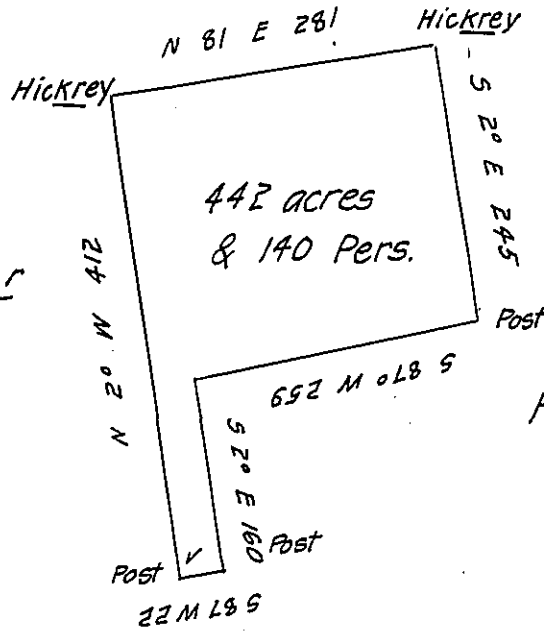


Thomas Swearingen

Joseph Redman Junr



Fredk Wm Starman

Donation Land

The above is a draught of a survey made the 14th day of
 May 1795 in pursuance of a warrant granted Thomas Reynolds
 dated the 14th day of Aprile 1792 situated on the waters of Beaver
 Creek Alleghany County called Followfield Containing 442 acres
 & 140 perches & allowance of six per cent &c.

Thomas Stokely D. S.

Daniel Brodhead Esqr

Surveyor Genl of Penna

IN TESTIMONY that the above is a copy of the original remaining on file in
 the Department of Internal Affairs of Pennsylvania, made
 conformably to an Act of Assembly approved the 16th day of
 February, 1833, I have hereunto set my Hand and caused
 the Seal of said Department to be affixed at Harrisburg,
 this ninth day of April 1907

Joseph R. Quinn
 Secretary of Internal Affairs.